

# Shape and Behavior Encoded Tracking of Bee Dances

Ashok Veeraraghavan, *Student Member, IEEE*, Rama Chellappa, *Fellow, IEEE*,  
and Mandyam Srinivasan, *Member, IEEE*

## Abstract

Behavior analysis of social insects has garnered impetus in recent years and has led to some advances in fields like control systems, flight navigation etc. Manual labeling of insect motions required for analyzing the behaviors of insects requires significant investment of time and effort. In this paper, we propose certain general principles that help in simultaneous automatic tracking and behavior analysis with applications in tracking bees and recognizing specific behaviors exhibited by them. The state space for tracking is defined using position, orientation and the current behavior of the insect being tracked. The position and orientation are parametrized using a shape model while the behavior is explicitly modeled using a three-tier hierarchical motion model. The first tier (dynamics) models the local motions exhibited and the models built in this tier act as a vocabulary for behavior modeling. The second tier is a Markov motion model built on top of the local motion vocabulary which serves as the behavior model. The third tier of the hierarchy models the switching between behaviors and this is also modeled as a Markov model. We address issues in learning the three-tier behavioral model, in discriminating between models, detecting and in modeling abnormal behaviors. Another important aspect of this work is that it leads to joint tracking and behavior analysis instead of the traditional track and then recognize approach. We apply these principles for tracking bees in a hive while they are executing the waggle dance and the round dance.

## Index Terms

Tracking, Behavior Analysis, Activity Analysis, Waggle Dance, Bee Dance.

Ashok Veeraraghavan and Rama Chellappa are with the University of Maryland, College Park. Mandyam Srinivasan is with the University of Queensland, Brisbane, Australia. This work was done when Dr.Srinivasan was at the Australian National University, Canberra. This work was partially supported by the NSF-ITR Grant 0325119, Army Research Office MURI ARMY-W911NF0410176, Technical Monitor Dr.Tom Doligalski, U.S. AFOSR Contract F62562, U.S. AOARD contract FA4869-07-1-0010 and Australian Research Council Grants FF0241328, CE0561903 and DP020863.

## I. INTRODUCTION

Behavioral research in the study of the organizational structure and communication forms in social insects like the ants and bees has received much attention in recent years [1][2]. Such a study has provided some practical models for tasks like work organization, reliable distributed communication, navigation etc [3][4]. Usually, when such an experiment to study these insects is setup, the insects in an observation hive are videotaped. The hours of video data are then manually studied and hand-labeled. This task of manually labeling the video data takes up the bulk of the time and effort in such experiments. In this paper, we discuss general methodologies for automatic labeling of such videos and provide an example by following the approach for analyzing the movement of bees in a bee hive. Contrary to traditional approaches that first track objects in video and then recognize behaviors using the extracted trajectories, we propose to simultaneously track and recognize behaviors. In such a joint approach, accurate modeling of behaviors act as priors for motion tracking and significantly enhances motion tracking while accurate and reliable motion tracking enables behavior analysis and recognition.

We present a system that can be used to analyze the behavior of insects and, more broadly, provide a general framework for the representation and analysis of complex behaviors. Such an automated system significantly speeds up the analysis of video data obtained from experiments and also reduces manual errors in the labeling of data. Moreover, parameters like the orientation of various body parts of the insects (which are of great interest to behavioral researchers) can be automatically extracted using such a framework. The system requires the technical input of a behavioral researcher (who would be the end user) regarding the type of behaviors that would be exhibited by the insect being studied.

The salient characteristics of this paper are the following:

- We suggest a joint tracking and behavior analysis instead of the traditional "track and then recognize" approach for activity analysis. The principles for simultaneous tracking and behavior analysis presented in this paper should be applicable in a wide range of scenarios like analyzing sports videos, activity monitoring, surveillance etc.
- We show how the method can be extended to tackle multiple behaviors using hierarchical Markov models to model various behaviors. We define instantaneous low level motion states like hover, turn, waggle etc., and model each of the dances as a Markov model over these low level motion states. Switching between behaviors (dances) is modeled as another Markov model over the discrete labels

corresponding to the various dances.

- We also present methods for detecting and characterizing abnormal behaviors.
- In particular, we study the simultaneous tracking and analysis of bee dances in their hive. This is an appropriate setting in which to study the "track and recognize simultaneously" approach suggested by this paper since a) The extreme clutter and presence of several similar bees make traditional tracking in such videos extremely difficult and consequently most tracking algorithms suffer frequent missed tracks and b) The rich variety of structured behaviors that the bees exhibit enables a rigorous test of behavior modeling. We have modeled a few of the dances of the foraging bees and estimated the parameters of the waggle dance.

#### A. *Prior Work in Tracking:*

There has been significant work on tracking objects in video. Most tracking methodologies can be classified as either deterministic or stochastic. Deterministic approaches solve an optimization problem under a prescribed cost function [5][6]. Stochastic approaches estimate posterior distribution of the position of the object in the current frame using a Kalman filter or particle filters [7][8][9][10][11][12]. Most of these do not directly adapt well to tracking insects because they exhibit very specific forms of motion ( for example, bees can turn by a right angle within 2 or 3 frames). In order to extend such tracking methods, it is important to consider the anatomy (body parts) of these insects and incorporate both their structure and the nature of their motions in the tracking algorithm.

The use of prior shape and motion models to facilitate tracking has been recently explored in several works for the problem of human body tracking. The shape of the human body has been modeled as anything ranging from a simple stick-figure model [13] to a complex super-quadric model [14]. Several tracking algorithms use motion models (like constant velocity model, random walk model etc) for tracking [9] [12][15][11]. There have also been some recent attempts to model specific motion characteristics of the human body to aid as priors in tracking [16][17][18][19][20].

Previous work on tracking insects has concentrated on speed and reliability of estimating just the position of the center of insects in videos [12] [21]. Inspired by the studies in human body tracking mentioned above, we explore the effectiveness of higher level shape and motion models for the problem of tracking insects in their hives. We believe that such methods lead to algorithms where tracking and behavior

analysis can both be performed simultaneously i.e., while these motion priors aid reliable tracking, the parameters of the motion models also encode information about the nature of behavior being exhibited. We model the behaviors exhibited by the insect using Markov motion models and use these models as priors in a tracking framework to reliably estimate the location and the orientation of the various body parts of the insect. We also show that it is possible to make inferences about the behavior of the insect using the parameters estimated via the motion model.

### *B. Bee Dances as a means of communication*

When a worker honeybee returns to her nest after a visit to a nourishing food source, she performs a so-called 'dance', on the vertical face of the honeycomb, to inform her nest mates about the location of the food source [1]. This behavior serves to recruit additional workers to the location, thus enabling the colony to exploit the food source effectively. Bees perform essentially two types of dances, in the context of communicating the location of food sites. When the site is very close to the nest (typically within a radius of 50 metres), the bee performs a so-called 'round dance'. This dance consists of a series of alternating left-hand and right-hand loops, as shown in Figure 1(a). It informs the nest mates that there is an attractive source of food located within a radius of about 50 m from the nest. When the site is at a considerable distance away from the nest (typically greater than 100 meters) the bee performs a different kind of dance, the so-called 'waggle dance', as shown in Figure 1(b). In this dance, the transition between one loop and the next is punctuated by a 'waggle phase' in which the bee waggles her abdomen from side to side whilst moving in a more-or-less straight line. Thus, the bee executes a left-hand loop, performs a waggle, executes a right-hand loop, performs a waggle, executes a left-hand loop, and so on. During the waggle phase, the abdomen is waved from side to side at an approximately constant frequency of about 12 Hz. The waggle phase contains valuable information about the location of the food source: The duration of the waggle phase (or, equivalently, the number of waggles in the phase) is roughly proportional to the bee's perceived distance of the food source: the longer the duration, the greater the distance. The orientation of the waggle axis (the average direction of the bee's long axis during the waggle phase) with respect to the vertically upward direction conveys information about the direction of the food source. The angle between the waggle axis and the vertically upward direction is equal to the azimuthal angle between the sun and the direction of the food source. Thus, the waggle dance is used to convey the position of

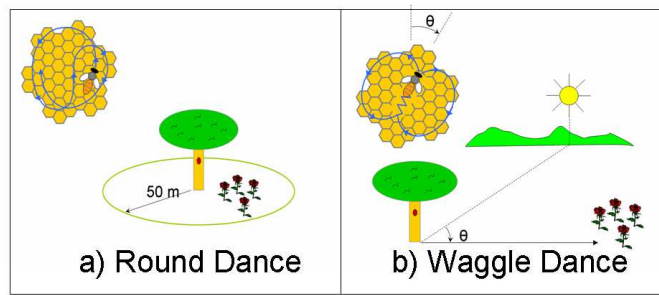


Fig. 1. Illustration of the 'round dance', the 'waggle dance' and their meaning.

the food source in a polar co-ordinate system (in terms of distance and direction), with the nest being regarded as the origin and the sun being used as a directional compass [1]. The 'attractiveness' of the food source is also conveyed in the waggle dance: the greater the attractiveness, the greater is the number of loops that the bee performs in a given dance, and the shorter the duration of the return phase (the non-waggle period) of each loop. The waggle frequency of 12 Hz is remarkably constant from bee to bee and from hive to hive [1]. The attractiveness of a food source, however, may depend upon the specific foraging circumstances, such as the availability of other sources and their relative profitability, as well as an individual's knowledge and experience with the various sites. Thus, the number of dance loops and the duration of the return phase may vary from bee to bee, and from one day to the next in a given bee [1].

There are additional dances that bees use to communicate other kinds of information [1]. For example, there is the so-called 'jostling dance', where a returning bee runs rapidly through the nest, pushing nest mates aside, apparently signaling that she has just discovered an excellent food source; the 'tremble' dance [22], where a returning forager shakes her body from side to side, at the same time rotating her body axis by about 50 deg every second or so, is used by a returning bee to inform her nest mates that there is too much nectar coming in, and she is consequently unable to unload her food to a food-storing bee [22]; the 'grooming dance' in which a standing bee raises her middle legs and shakes her body rapidly to and fro, beckoning other bees to assist her with her grooming activities; and the 'jerking dance', performed by a queen, consisting of up-and-down movements of the abdomen, usually preceding swarming or a nuptial flight. However, the pinnacle of communication in insects resides undoubtedly in the waggle dance. The surprisingly symbolic and abstract way in which this dance is used to convey information about the location of a food source has earned it the status of a 'language' [1].

### *C. Prior Work in Analyzing Bee Dances*

There is a great deal of interest, and a significant need for developing automated methods for (a) detecting dancing bees in video sequences (b) accurately tracking dance trajectories and (c) extracting the dance parameters described above. But in most of these cases, the experimenters manually study the videos of bee dances and annotate the various bee dances. This is usually time-consuming, tiring and error-prone. Some recent efforts into automating such tasks have started emerging with the advances made in vision based tracking systems. [23] suggests the use of Markov models for identifying certain segments of the dances but this method relies on the availability of manually labeled data. [12] suggests the use of a Rao-Blackwellized particle filter to track the center of the bee during dances. The work does not address the issue of behavioral analysis once tracking is done. Moreover, some of the parameters of the dances that are essential for decoding the dance like the orientation of the thorax during the waggle etc., are not estimated directly. [21] suggests the use of parametric switched linear dynamical system (p-SLDS) for learning motions that exhibit systematic temporal and spatial variations. They use the position tracking algorithm proposed by [12] and obtain trajectories of the bees in the videos. An Expectation-Maximization based algorithm is used for learning the p-SLDS parameters from these trajectories. Much in the same spirit, we also model the various behaviors explicitly using hierarchical Markov models (which can be viewed as SLDS). Nevertheless, while position tracking and behavior interpretation are completely independent in their system, here, we close the loop between position tracking and behavior inference thereby enabling persistent and simultaneous tracking and behavior analysis. In such a "simultaneous tracking and behavioral analysis approach" the behavior modeling enhances tracking accuracy while the tracking results enable accurate interpretation of behaviors.

### *D. Organization of the paper*

In Section II, we discuss the shape model to track insects in videos and show how using the model helps in inferring parameters of interest about the motions exhibited by the insects. Section III discusses the issue of modeling behaviors, detecting and characterizing abnormal behaviors. Section IV discusses the tracking algorithm. Detailed experimental results for the problem of tracking and analysing bee dances are provided in Section V.

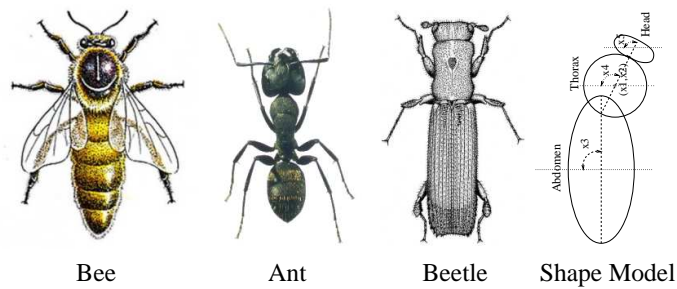


Fig. 2. A Bee, an Ant, a Beetle and Shape Model

## II. ANATOMICAL/SHAPE MODEL

Modeling the anatomy of insects is very important for reliable tracking, because the structure of their body parts and their relative positions present some physical limits on their possible relative orientations. In spite of their great diversity, the anatomy of most insects is rather similar. All insects possess six legs. An insect body has a hard exoskeleton protecting a soft interior. The body is divided into three main parts—the head, thorax and the abdomen. The abdomen is divided into several smaller segments. Figure 2 shows the image of a bee, an ant and a beetle. Though there are individual differences in their body structure, the three main parts of the body are evidently visible. Each of these three parts can be regarded as rigid body parts for the purposes of video based tracking. The interconnection between parts provide some physical limits for the relative movement of these parts. Most insects also move towards the direction of their head. Therefore, during specific movements such as turning, the orientation of the abdomen usually follows the orientation of the head and the thorax with some lag. Such interactions between body parts can be easily captured using a structural model for insects.

We model the bees with three ellipses, one for each body part. We neglect the effect of the wings and legs on the bees. Figure 2 shows the shape model of a bee. Note that the same shape model can be used to adequately model most other insects also. The dimensions of the various ellipses are fixed during initialization. Currently the initialization for the first frame is manual. It consists of clicking two points to indicate the enclosing rectangle for each ellipse. Automatic initialization is a challenging problem in itself and is outside the scope of our current work.

The location of the bee and its parts in any frame can be given by five parameters— namely, the location of the center of the thorax(2 parameters), the orientation of the head, the orientation of the thorax and the orientation of the abdomen (refer Figure 2). Tracking the bee over a video essentially amounts to

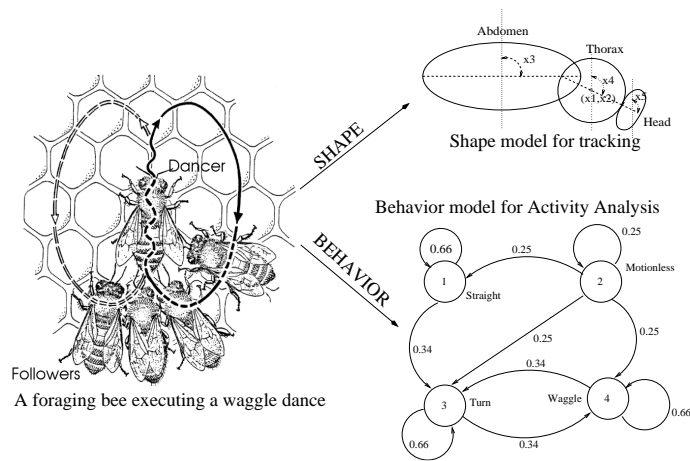


Fig. 3. A Bee performing a waggle dance and the behavioral model for the Waggle dance

estimating these five model parameters ( $\mathbf{X} = [x_1 \ x_2 \ x_3 \ x_4 \ x_5]'$ ) for each frame. This 5-parameter model has a direct physical significance in terms of defining the location and the orientation of the various body parts in each frame. These physical parameters are of importance to behavioral researchers.

#### A. Limitations of the Anatomical Model

We have assumed that the actual sizes of these ellipses do not change with time. This would of course be the case as long as the bee remains at the same distance from the camera. Since the behaviors we study in our work (like the waggle dance) are performed on a vertical plane inside the beehive, and the optical axis of the video camera was perpendicular to this plane, the bees projected the same part sizes during the entire length of video captures. Nevertheless, it is very easy to incorporate the effect of distance from the camera in our shape model, by introducing a scale factor as one more parameter in our state space. Moreover, the bees are quite small and were far enough from the camera that perspective effects could be ignored. The spatial resolution with which the bees appear in the video also limit the accuracy with which the physical model parameters can be recovered. For example, when the spatial resolution of the video is low, we may not be able to recover the orientation of the body parts individually.

### III. BEHAVIOR MODEL

Insects, especially social insects like bees and ants, exhibit rich behaviors as described in Section I-B. Modeling such behaviors explicitly is helpful in accurate and robust tracking. Moreover, explicitly modeling such behaviors also leads to algorithms where position tracking and behavior analysis are tackled



in a unified framework. Several algorithms use motion models (like constant velocity model, random walk model etc) for tracking [9] [12][15][11]. We propose the use of behavioral models for the problem of tracking insects. Such behavioral models have been used for certain other specific applications like human locomotion [18][19][20]. The difference between motion models and behavioral models is the range of time scales at which modeling is done. Motion models typically model the probability distribution (pdf) of the position in the next frame as a function of the position in the current frame. Instead, behavioral models capture the probability distribution of position over time as a function of the behavior that the tracked object is exhibiting. We believe that the use of behavioral models presents a significant layer of abstraction that enhances the variety and complexity of the motions that can be tracked automatically.

#### A. *Deliberation of the Behavior model*

The state space for tracking the position and body angles of the insect in each frame of the video sequence is determined by the choice of the shape model. In our specific case, this state space comprises of the x,y position of the center of the thorax and the orientation of the three body parts in each frame ( $\mathbf{X} = [x_1 \ x_2 \ x_3 \ x_4 \ x_5]'$ ). A given behavior can be modeled as a dynamical model on this space. At one extreme one can attempt to learn a dynamical model like an autoregressive model or an autoregressive and moving average (ARMA) model directly on this state space. A suitably and carefully selected model of this form might be able to capture large time scale interactions that are a characteristic of complex behaviors. But these models constructed directly on the position state space suffer from two significant handicaps. Firstly, to incorporate long range interactions these models would necessarily have a large number of parameters and learning all these parameters from limited data would be brittle. It would be nice to somehow learn a compact set of parameters that can capture such large time range interactions. Secondly, these models are opaque to the behavioral researcher who is continuously interacting with the system during the learning phase. Since the system does not replace the behavioral researcher but rather assists him by tracking and analyzing behaviors of bees that the researcher selects, it is very important for the model to be easily amenable to the intended user of the system.

One can achieve both these objectives by abstracting out local motions like turning, hovering, moving straight ahead etc, and modeling the behavior as a dynamical model on such local motions. Such a model would be simple and intuitive to the behavior researcher and the number of parameters required to model

behaviors would be dependent only on the number of local motions modeled. When the need to specify and learn new behaviors arises, he/she would have to focus only on the dynamical model of the local motions, since the model for the local motions themselves would already be a part of system. *In short, the local motions act as some sort of a vocabulary that enables the end user to effectively interact with the system.*

### B. Choice of Markov Model

As described in the previous section, we first define probability distributions for some basic motions such as moving straight ahead, turning, waggle and hovering at the same location. Once these descriptions have been learnt we define each behavior using an appropriate model on this space of possible local motions. Prior work [23] on analyzing the behaviors of bees has used Markov models to model the behaviors. That study reports promising results on recognizing behaviors using such Markov models. More recently, [21] used SLDS to model and analyze bee dances. They then noted that the models can be made more specific and accurate by incorporating a duration model within the framework of a linear dynamical system. They use this parametrized duration modeling with a switched linear dynamical system and show improved performance[24]. We could in principle choose any of these models for analyzing bee dances. Note that the tracking algorithm would be identical irrespective of the specific choice of model since it is based on particle filtering and therefore just requires that we be able to efficiently sample from these motion models. The various dances that the bees perform are very structured behaviors and consequently we need these models to have enough expressive power to capture these structures. Nevertheless, we also note that at this stage these models are acting as priors to the tracking algorithm and therefore if these models were very peaky/specific, then even a small change in the actual motion of the bees might cause a loss of track. Therefore, the model must also be fairly generic, in the sense that it must be able to continue tracking even if the insect deviates from the model. Taking these factors into account we used Markov models very similar to those used by [23] to model bee behaviors. We noticed that even such a simple Markov model significantly aided tracking performance and enabled the tracker to continue to maintain track in several scenarios where the traditional tracking algorithms failed (see Section V-D). Another significant advantage of choosing a simple Markov model to act as behavior priors rather than more sophisticated and specific models, is the fact that the very generality of the model makes the tracking algorithm fairly

insensitive with respect to the initialization of the model parameters. In practice, we found that the tracking algorithm was fairly insensitive to the initialization of the model parameters and was quickly able to refine the corresponding model parameters within about 100-200 frames.

### C. Mixture Markov Models for Behavior

Mixture models have been proposed and used successfully for tracking [25][26]. Here, we advocate the use of Markovian mixture models in order to enable persistent tracking and behavior analysis. Firstly, basic motions are modeled creating a vocabulary of local motions. These basic motions are then regarded as states and behaviors are modeled as being Markovian on this motion state space. Once each specific behavior has been modeled as a Markov process, then our tracking system can simultaneously track the position and the behavior of insects in videos.

We model the probability distributions of location parameters  $\mathbf{X}$  for certain basic motions ( $m_1 - m_4$ ). We model four different motions- 1) Moving straight ahead, 2) Turning, 3) Waggle, and 4) Motionless. The basic motions, straight, waggle and motionless are modeled using Gaussian pdfs ( $p_{m1}, p_{m3}, p_{m4}$ ) while a mixture of two Gaussians ( $p_{m2}$ ) is used for modeling the turning motion (to accommodate the two possible turning directions).

$$p_{m_i}(X_t/X_{t-1}) = N(X_{t-1} + \vec{\mu}_{m_i}, \Sigma_{m_i}); \text{ for } i = 1, 3, 4. \quad (1)$$

$$p_{m_2}(X_t/X_{t-1}) = 0.5N(X_{t-1} + \vec{\mu}_{m_2}, \Sigma_{m_2}) + 0.5N(X_{t-1} - \vec{\mu}_{m_2}, \Sigma_{m_2}) \quad (2)$$

Each behavior  $B_i$  is now modeled as a Markov process of order  $K_i$  on these motions, i.e.,

$$\mathbf{s}_t = \sum_{k=1}^{K_i} A_{B_i}^k \mathbf{s}_{t-k}; \quad (3)$$

where  $s_t$  is a vector whose  $j^{th}$  element is  $P(\text{motion state} = m_j)$  and  $K_i$  is the model order for the  $i^{th}$  behavior  $B_i$ . The parameters of each behavior model are made of autoregressive parameters  $A_{B_i}^k$  for  $k = 1..K_i$ . We discuss methods for learning the parameters of the behavior model later.

We have modeled three different behaviors - the waggle dance, the round dance and a stationary bee using a first order Markov model. For illustration, we discuss the manner in which the waggle dance is modeled. Figure 3 shows the trajectory followed by a bee during a single run of the waggle dance. It also shows some followers who follow the dancer but do not waggle. A typical Markov model for the waggle dance is also shown in Figure 3.

The trajectory of the bee can now be viewed as a realization from a random process following a mixture of behaviors. In addition, we assume that the behavior exhibited by the bee changes in a Markovian manner, i.e.,

$$B_t = T_B B_{t-1}; \quad (4)$$

where  $T_B$  is the transition probability matrix between behaviors. Note that  $T_B$  has a dominant diagonal. Estimating the trajectory and the specific behavior exhibited by the bee at any instant is then a state inference problem. This can be solved using one of several techniques for estimating the state given the observations.

Thus the model consists of a 3 tier hierarchy. At the first level, the dynamics of local motions are characterized. These act as a vocabulary enabling the behavior researcher to easily interact with the system in order to add new behaviors, and analyze the output of the tracking algorithm without being bogged down by the particulars of the data capture. Behaviors that bees exhibit are modeled as Markovian on the space of local motions forming the second tier of the hierarchy. Finally, switching between behaviors is modeled as a diagonal dominant Markov model completing the model. The first two tiers of the hierarchy, dynamics and behavior may be collapsed into a single tier. But this would be disadvantageous since it would a) couple the specifics of data capture with the behavior models and b) also make it significantly more difficult for the behavior researcher (end user) to efficiently interact with the system.

#### *D. Limitations and Implications of the choice of Behavior model*

As described above, the choice of Markov model on a vocabulary of a set of low level motions was motivated primarily from two design considerations - a) ease of use for the end user b) generality of the model allowing the tracking algorithm to be robust to initialization parameters. But this choice also leads to certain limitations. For one, it might indeed be possible to collapse the entire three tier hierarchy of motion modeling into one large set of motion models all at the dynamics stage. But, such a model would suffer from significant disadvantages since the number of required parameters would significantly increase. Moreover, each new behavior must be modeled from scratch, while if we maintained the hierarchy, then the vocabulary of local motions learnt at the lower tiers of the hierarchy can be used to simplify the learning problem for new behaviors. [27] provides a detailed characterization of the limitations and expressive power of such hierarchical Markov models while [28] describes a methodology to analyze such linear

hybrid dynamical systems. The hierarchical model also assumes that the various tiers of the hierarchy are semi-independent and that the particular current motion state does not have a direct influence on the behavior in subsequent frames. This would not necessarily be true, since particular behaviors might have specific end patterns of motion. In future, we would like to study how one might introduce such state based transition characteristics into the behavior model, while retaining both the hierarchical nature of the model itself and keeping complexity of the model manageable.

### E. Learning the parameters of the Model

Learning the behavior model is now equivalent to learning the autoregressive parameters  $A_{B_i}^k$  for  $k = 1..K_i$ , for each behavior  $B_i$  and also learning the transition probability matrix between behaviors given by  $T_B$ . This step can either be supervised or unsupervised.

1) *Unsupervised Learning/Clustering*: In unsupervised learning we are provided only the sequence of motion states that are exhibited by the bee for frames 1 to  $N$ , i.e., we are provided with a time series  $s_1, s_2, s_3, \dots, s_N$ , where each  $s_i$  is one of the motion states  $m_1..m_4$ . We are not provided with any annotation of the behaviors exhibited by the bee, i.e., we do not know the behavior exhibited by the bee in each of these frames. This is essentially a clustering problem. A maximum likelihood approach to this clustering problem involves maximizing the probability of the state sequence given the model parameters.

$$\hat{Q} = \arg \max_Q P(s_{1:N}/Q); \quad (5)$$

where  $Q = [A_{B_i}^k]_{k=1..K_i}^{i=1..B}$  represents the model parameters. Such an approach to learning the parameters of a mixture model for a "juggling sequence" was shown in [29]. They show how expectation-maximization(EM) can be combined with CONDENSATION to learn the parameters of a mixture model. But as they point out there is no guarantee that the clusters found will correspond to semantically meaningful behaviors. For our specific problem of interest, viz., tracking and annotating activities of insects we would like to learn models for specific behaviors like waggle dance. Therefore, we use a supervised method to learn the parameters of each behavior. Nevertheless, unsupervised learning is useful while attempting to learn anomalous behaviors and we will revisit this issue later.

2) *Supervised Learning*: Since it is important to maintain the semantic relationship between learnt models and actual behaviors exhibited by the bee, we resort to supervised learning of the model parameters. For a small training database of videos of bee dances, we obtain manual tracking and labeling of both the

motion states and the behaviors exhibited, i.e., for a training database we first obtain the labeling over the three tiers of the hierarchy. For each frame  $j$  of the training video we have the position  $X^j$ , the motion state  $m^j$  and the behavior  $B^j$ .

**Learning Dynamics:** The first tier of the three tier model involves the local motion states like moving straight, turning, waggle and motionless. As described in (1) and (2), each of these local motion states is modeled either using a Gaussian or using a mixture of Gaussians. The mean and the variance of the corresponding Normal distributions are directly learnt from the training as

$$\hat{\mu}_{mi} = E[(X^j - X^{j-1}) | m^j = i] \quad (6)$$

$$= \frac{1}{N_i} \sum_{j=1,2,\dots,N}^{m^j=mi} (X^j - X^{j-1}) \quad (7)$$

$$\Sigma_{mi} = E[(X^j - X^{j-1} - \mu_{mi})(X^j - X^{j-1} - \mu_{mi})^T] \quad (8)$$

$$= \frac{\sum_{j=1,2,\dots,N}^{m^j=mi} (X^j - X^{j-1} - \hat{\mu}_{mi})(X^j - X^{j-1} - \hat{\mu}_{mi})^T}{N_i - 1} \quad (9)$$

where, the summations are carried out only for the frames in which the annotated motion state for that frame is  $mi$ , and the total number of such frames is denoted by  $N_i$ . In the case of a mixture of Gaussians model (for turning), we use the EM algorithm to learn the model parameters. In practice, learning dynamics is the simplest of the three tiers of learning.

**Learning Behavior:** The second tier of the hierarchy involves the Markov model for each behavior. For the  $i^{th}$  behavior  $B_i$  we learn the model parameters using maximum likelihood estimation. As an example let us assume that the insect exhibited behavior  $B_i$  for frame 1 to  $N$ . In the training database, we have obtained a corresponding sequence of motion states  $s_1, s_2, s_3, \dots, s_N$  where  $s_j$  is one of the four possible motion states (straight,turn,waggle,motionless) exhibited in frame  $j$ . We can learn the model parameters of the Markov model for behavior  $B_i$  by

$$\hat{Q}_i = \arg \max_{Q_i} P(s_{1:N}/Q_i); \quad (10)$$

where  $Q_i = [A_{B_i}^k]^{k=1..K_i}$  represents the model parameters for behavior  $B_i$ . In our current implementation, we have modeled behaviors for waggle dance, round dance and a stationary bee. We have used Markov models of order 1, so that we need to only estimate the transition probabilities between each motion state. These are estimated as given below.

$$\hat{A}_{B_i}(l, k) = E(P(s_t = k / s_{t-1} = l)) \quad (11)$$

$$= \frac{N_{kl}}{N_l} \quad (12)$$

where,  $E$  is the expectation operator,  $N_l$  is the number of frames in which the annotated motion state was  $ml$  and  $N_{kl}$  is the number of times in which the annotated motion state  $mk$  appeared immediately after motion state  $ml$ . Note that since this step of the learning procedure concerns only a particular behavior  $B_i$ , only the frames whose annotated behavior is  $B_i$  are taken into account. Learning the model parameters of a particular behavior depends upon two factors -the inherent variability in the behavior and the amount of training data available for that particular behavior. Some behaviors have significant variability in their executions and learning model parameters for these behaviors could be unreliable. Moreover, some behaviors are uncommon and therefore, the amount of training data available for these behaviors might be too little to accurately learn the model parameters. Experiments to indicate the minimum number of frames one needs to observe a behavior before one can learn the model parameters are shown in Section III-G.

**Switching between behaviors** The third tier of the model involves the switching between behaviors. The switching between behaviors is also modeled as being Markovian with the transition matrix denoted as  $T_B$ . The transition matrix  $T_B$  can be learned as,

$$\hat{T}_B(l, k) = E[B^j = k | B^{j-1} = l]. \quad (13)$$

Learning the switching model is the most challenging part of the learning phase. Firstly, within a given length of training data, there might be very few transitions observed and therefore, sufficient data might not be available to learn the switching matrix  $T_B$  accurately. Secondly, there is really no particular ethological justification to model the transitions between behaviors using a Markov model, though in practice the model seems adequate. Therefore, once we learn the transition matrix  $T_B$  from the training data, we also ensure that every transition is possible, i.e.,  $T_B(l, k) \neq 0 \forall (l, k)$ , by adding a small value  $\epsilon$  to every element in the matrix and then normalizing the matrix so that it still represents a transition probability matrix (sum of each row = 1 ).

#### *F. Discriminability among Behaviors*

The disadvantage in using supervised learning is that since learning for each behavior is independent of others, there is no guarantee that the learnt models are sufficiently distinct for us to be able to distinguish among different behaviors. There is reason, however, to believe that this would be the case since in actual practice these behaviors are distinct enough. Nevertheless we need some quantitative measure to

characterize the discriminability between models. This would be of great help especially when we have several behaviors.

1) *Rabiner-Juang Distance*: There are several measures for computing distances between Hidden Markov Models. In particular, one distance measure that is popular is the Rabiner-Juang distance [30]. But such a distance measure is based on the KL distance and therefore captures the distance between the asymptotic observation densities. However, in actual practice, we are always called upon to recognize the source model using observation or state sequences of finite length. In fact, in our specific scenario, we need to re-estimate the behavior exhibited by the bee every few frames. Therefore, in such situations we need to know how long a state/observation sequence is required before we can disambiguate between two models.

2) *Probability of N-Misclassification*: Suppose we have D different Markov models  $M_1..M_D$ ,  $M_i$  being of order  $K_i$ . We define the Probability of N-Misclassification for Model  $M_i$  as the probability that a state sequence of length  $N$  that is generated by model  $M_i$  is misclassified to some model  $M_j$ ,  $j \neq i$  using a maximum likelihood rule.

$$P_{M_i}(NMiscl) = 1 - \sum_{s_{1:N}} P(s_{1:N}/M_i) I(s_{1:N}, i) \quad (14)$$

where the summation is over all state sequences of length  $N$  and  $I(s_{1:N}, i)$  is an indicator function which is 1 only when  $P(s_{1:N}/M_i)$  is greater than  $P(s_{1:N}/M_j)$  for all  $j \neq i$ . The number of terms in the summation is  $S^N$  where  $S$  is the number of states in the state space. Even for moderate sizes of  $S$  and  $N$ , this is difficult to compute. But the summation will be dominated by few of the most probable state sequences. So a tight lowerbound can be obtained by Monte Carlo methods of sampling. An approximation to Probability of N-Misclassification can also be obtained using Monte-Carlo sampling methods. This is done by generating  $K$  independent state sequences  $Seq_1, Seq_2..Seq_K$  each of length  $N$  randomly using model  $M_i$ . For reasonably large  $K$ ,

$$P_{M_i}(NMiscl) \approx 1 - 1/K \sum_{k=1, \dots, K} I(Seq_k, i) \quad (15)$$

Figure 4 shows the Probability of N-Misclassification for the three modeled behaviors Waggle, Round and the Stationary bee for different values of  $N$ . We choose a window length  $N = 25$  which provides us with sufficiently low misclassification errors while being small enough compared to average length of behaviors so as to not smooth across behaviors.



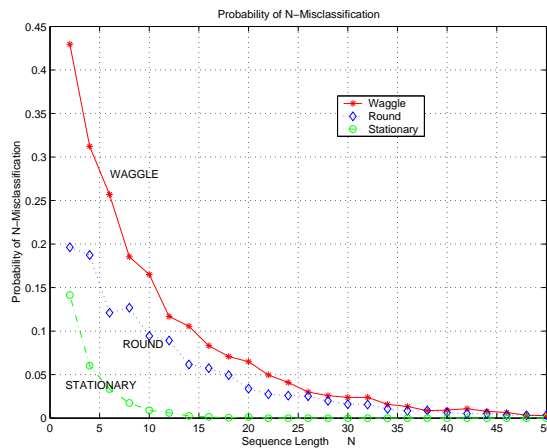


Fig. 4. Probability of N-Misclassification

### G. Detecting/Modeling Anomalous Behavior

A change in behavior of the insect would result in the behavior model not being able to explain the observed motion of the insect. When this happens we need to be able to detect and characterize these abnormal behaviors so that the tracking algorithm is able to continue to maintain track. A change in behavior can either be slow or drastic. We use the observation likelihood and the ELL (Expected negative log-likelihood of the observation given the model parameters) as proposed in [31][32] in order to detect drastic and slow changes in behavior.

**Drastic Change:** When there is a drastic change in the behavior of the insect, this would cause the tracking algorithm to lose track. Once it loses track, the image within the shape model of the bee does not resemble the bee anymore. Therefore, the observation likelihood decreases rapidly. This can be used as a statistic to detect drastic changes in behavior. Once the anomalous behavior is detected, it would of course be left to the expert to manually identify and characterize the newly observed behavior.

**Slow Change:** When the change in system parameters is slow, i.e., the anomalous behavior is not drastic enough to cause the tracker to lose track, we use a statistic very closely related to the ELL proposed in [31] [32]. Let us assume that we have modeled behavior  $M0$ . Supposing the actual behavior exhibited by the insect is  $M1$ . We are required to decide whether the behavior exhibited is  $M0$  or not with knowledge of the state sequence  $x_{1:N}$  alone. Let Hypothesis  $H0$  be that the behavior being exhibited is  $M0$  while Hypothesis  $H1$  be that the behavior exhibited is not  $M0$ , i.e.,  $\overline{M0}$ . The likelihood ratio test for such a

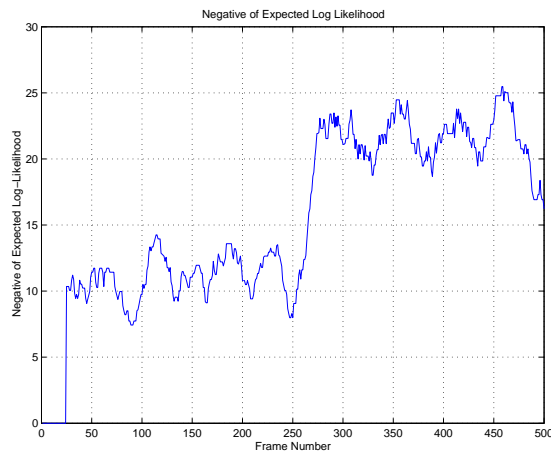


Fig. 5. Abnormality Detection Statistic

hypothesis is given below. The state sequence  $x_{1:N}$  was generated by model  $\overline{M0}$  iff,

$$\frac{P(\overline{M0}/x_{1:N})}{P(M0/x_{1:N})} \geq \eta \quad \eta > 0 \quad (16)$$

$$\Rightarrow \frac{1 - P(M0/x_{1:N})}{P(M0/x_{1:N})} \geq \eta \quad \eta > 0 \quad (17)$$

$$\Rightarrow P(M0/x_{1:N}) \leq 1/(\eta + 1) \quad (18)$$

$$\Rightarrow P(x_{1:N}/M0)P(M0)/P(x_{1:N}) \leq 1/(\eta + 1) \quad (19)$$

$$\Rightarrow P(x_{1:N}/M0) \leq \beta \quad \beta > 0 \quad (20)$$

$$\Rightarrow D = -\log(P(x_{1:N}/M0)) \geq T \quad T = -\log(\beta) \quad (21)$$

where,  $D$  is the decision statistic and  $T$  is the decision threshold.

When the bee exhibits an anomalous behavior, then the likelihood that the state sequence observed was generated by the original model decreases as shown above. Therefore, we can use  $D$  as a statistic to detect slow changes. When  $D$  increases beyond a certain threshold  $T$  we detect anomalous behavior. Once slow changes are detected, they can then be automatically modeled. This can be done by learning a mixture model for the observed state sequence using principles outlined in [29].

Since we did not have any real video sequence of an abnormal behavior we performed an experiment on synthetic data. We generated an artificial sequence of motion states for 500 frames. The first 250 frames correspond to the model learnt for the waggle dance. The succeeding 250 frames were from a Markov model of order 1, with transition probability matrix  $A$ . We computed the negative log-likelihood of the windowed state sequence, with a window length of 25. This statistic  $D$  is shown in figure 5. Changes

in model parameters are clearly visible at around frame 250 resulting in an increase in the negative log-likelihood (equivalent to an exponential decrease in the probability of the windowed sequence being generated from the waggle model). The anomalous behavior was automatically detected at frame 265. Moreover, we also used the next 150 frames to learn the parameters of the anomalous model(A). The estimated transition probability matrix( $\hat{A}$ ) was very close to the actual model parameters.

$$A = \begin{pmatrix} .30 & .30 & .20 & .20 \\ .20 & .25 & .25 & .30 \\ .80 & .10 & .05 & .05 \\ .50 & .10 & .20 & .20 \end{pmatrix} \quad \hat{A} = \begin{pmatrix} .30 & .22 & .23 & .25 \\ .30 & .18 & .22 & .30 \\ .78 & .13 & .04 & .05 \\ .47 & .06 & .28 & .19 \end{pmatrix}$$

#### IV. SHAPE AND BEHAVIOR ENCODED PARTICLE FILTER

We address the tracking problem as a problem of estimating the state  $X_1^t$  given the image observations  $Y_1^t$ . Since both the state transition model and the observation model are non-linear, methods like the Kalman filter are inadequate.

The particle filter [33][8][9] provides a method for recursively estimating the posterior pdf  $P(X_t/Y_1^t)$  as a set of  $N$  weighted particles  $\{X_t^{(i)}, \pi_t^{(i)}\}_{i=1}^N$ , from a collection of noisy observations  $\mathbf{Y}_1^t$ . The state parameters to be estimated are the position and orientation of the bee in the current frame ( $\mathbf{X}$ ). The observation is the color image of each frame ( $\mathbf{Y}_t$ ) from which the appearance of the bee ( $\mathbf{Z}_t^{(i)}$ ) can be computed for each hypothesised position( $\mathbf{X}_t^{(i)}$ ). The state transition and the observation models are given by,

$$\text{State Transition Model: } X_t = F_B(X_{t-1}, N_t) \quad (22)$$

$$\text{Observation Model: } Y_t = G(X_t, W_t) \quad (23)$$

where,  $N_t$  is the system noise and  $W_t$  is the observation noise. The state transition function  $F_B$  characterizes the state evolution for a certain behavior B. In usual tracking problems, the motion model is used to characterize the state transition function. In our current algorithm, the behavioral model described in Section 3.1 is used as the state transition function. Therefore, the state at time t, ( $X_t$ ) depends upon the state at the previous frame ( $X_{t-1}$ ), the behavioral model and the system noise. The observation function  $G$  models the appearance of the the bee (in the current frame) as a function of its current position(state

$X_t$ ), and observation noise. Once such a description for state evolution has been made, the particle filter provides a method for representing and estimating the posterior pdf  $P(X_t/Y_1^t)$  as a set of  $N$  weighted particles  $\{X_t^{(i)}, \pi_t^{(i)}\}_{i=1}^N$ . Then the state  $X_t$  can be estimated as the MAP estimate as given below,

$$\hat{X}_t^{MAP} = \arg \max_{X_t} \pi_t^{(i)} \quad (24)$$

The complete algorithm is given below

- 1) **Initialize** the tracker with a sample set according to a prior distribution  $p(X_0)$ .
- 2) **For** Frame = 1, 2, ...
  - a) **For** sample  $i = 1, 2, 3, \dots, N$ 
    - **Resample**  $X_{t-1} = \{\pi_{t-1}^{(i)}\}$
    - **Predict** the sample  $X_t^{(i)}$  by sampling from  $F_B(X_{t-1}^{(i)}, N_t)$  where  $F_B$  is a Markov model for the behavior B estimated in the previous frame.
    - **Compute Weights** for the particle using the likelihood model i.e.,  $\pi_t^{(i)} = p(Y_t/X_t^{(i)})$ . This is done by first computing the predicted appearance of the bee using the function  $G$  and then evaluating its probability from the observation noise model.
  - b) **Normalize** the weights using  $\pi_t^{(i)} = \pi_t^{(i)} / \sum_{i=1}^N \pi_t^{(i)}$  so that the particles represent a probability mass function.
  - c) **Estimate** the MAP or MMSE estimate of the state  $X_t$ . using the particles and their weights.
  - d) **Compute** the maximum likelihood estimate ( $\hat{s}^t$ ) for the current motion state given the position and orientation in the current and previous frame.
  - e) **Estimate** the behavior of the bee using a ML estimate from the various behavior models as  $\hat{B} = \arg \max_j P(\hat{s}_{t-24}^t/B_j)$ ., where  $B_j$  for  $j = 1, 2, \dots$  indicate the behaviors modeled.

### A. Prediction and Likelihood Model

In typical tracking applications it is customary to use motion models for prediction [9][12][15][11]. We use behavioral models in addition to motion models. The use of such models for prediction improves tracking performance significantly.

Given the location of the bee in the current frame ( $X_t$ ) and the image observation given by ( $Y_t$ ), we first compute the appearance ( $Z_t$ ) of the bee in the current frame (i.e., the color image of the three ellipse anatomical model of the bee ). Therefore, given this appearance ( $Z_t^{(i)}$ ) for each hypothesised position  $X_t^{(i)}$ , the weight for the  $i^{th}$  particle ( $\pi_t^{(i)}$ ) is updated as

$$\pi_t^{(i)} = p(Y_t/X_t^{(i)}) = p(Z_t^{(i)}/X_t^{(i)}) \quad (25)$$

where,  $Y_t$  is the observation. Since the appearance of the bee changes drastically over the video sequence, we use an appearance model consisting of multiple color exemplars ( $A_1, A_2, \dots, A_5$ ). The RGB components

of color are treated independently and identically. The appearance of the bee in any given frame is assumed to be Gaussian centered around one of these five exemplars, i.e.,

$$P(Z_t) = \frac{1}{5} \sum_{i=1}^{i=5} 0.2 N(Z; A_i, \Sigma_i) \quad (26)$$

where  $N(Z; A_i, \Sigma_i)$  stands for the Normal distribution with mean  $A_i$  and covariance  $\Sigma_i$ . In practice, we modeled the covariance matrix as a diagonal matrix with equal elements on the diagonal, i.e.,  $\Sigma_i = \sigma I$ , where  $I$  is the identity matrix. The mean observation intensities  $A_1 - A_5$  are learnt by specifying the location of the bee in 5 arbitrary frames of the video sequence. In practice, we also used 4 of these 5 exemplars from the training database, while the 5<sup>th</sup> exemplar was estimated from the initialization provided in the first frame of the current video sequence. In either case the performance was similar. For extremely challenging sequences, with large variations in lighting the former method performed better than the latter.

### B. Inference of Dynamics, Motion and Behavior

Inference on the three tier hierarchical model is performed using a greedy approach. The inference for the lower tiers is first performed independently and these estimates are then used in the inference for the next tier. Estimating the current position and orientation of the insect ( $\hat{X}^t$ ) is performed using a particle filter with observation and state transition models as described in the previous section. Once the position and the orientation are estimated using the particle filter, we then use these estimates to infer about the current motion state. The maximum likelihood estimate for the current motion state given the position and orientation in the current and previous state is estimated as

$$\hat{s}_{ML}^t = \arg \max_{mi \in \{1,2,3,\dots\}} P(\hat{X}^t - \hat{X}^{t-1} | s^t = mi) \quad (27)$$

Finally, we also need to estimate the behavior of the insect in the current frame. Once again, we assume that the inference for the lower tiers has been completed and based on the estimated motion states  $\hat{s}^{1:t}$ , we infer the maximum likelihood estimate for the current behavior. In order to perform this, we also need to decide an appropriate window length  $W$ . From section III-G, we see that a window length  $W$  of 25 is a good trade-off between recognition performance and smoothing across behavior transitions. Therefore, we do a maximum likelihood estimation for the behavior using a window length of 25 frames as

$$\hat{B} = \arg \max_j P(\hat{s}_{t-W+1}^t | B_j). \quad (28)$$

Since the behavior model  $B_j$ , is a simple Markov model of order 1 given by the transition matrix  $T_{B_j}$ , this maximum likelihood estimate is easily obtained as

$$\hat{B} = \arg \max_j P(\hat{s}_{t-W+1}^t | T_{B_j}) \quad (29)$$

$$= \arg \max_j \prod_{i=1,2,..W} T_{B_j}(\hat{s}_{t-i}, \hat{s}_{t+1-i}) \quad (30)$$

## V. EXPERIMENTAL RESULTS

### A. Experimental Methodology

For a training database of videos, manual tracking was performed, i.e., at each frame the position, motion and the behavior of the bee was manually labeled. Following the steps outlined in Section III-E.2, the model for dynamics, behavior and the behavior transitions was learnt. During the test phase, for every test video sequence, the user first identifies the bee to be tracked and initializes the position of the bee by identifying four extreme points on the abdomen, thorax and head respectively. Then the tracking algorithm uses this initialization with a suitably chosen variance, as the prior distribution  $p(X_0)$  and automatically tracks both the position and the behavior of the bee as described in Section IV. This is a significant difference in experimental methodology from most other previous work. In [23], they first obtain manually tracked data for the entire video sequence to be analysed. Then the Markov model is used in order to classify the various behaviors. In other related work, like [21] and [24], for each test video sequence, the tracking is independently accomplished using a tracking algorithm [12], that has no knowledge of the behavior models. Once the entire video sequence is tracked, then analysis of the tracked data is performed using specific behavior models. The training phase for our algorithm is similar to those in [23], [21] and [24] in the sense that all these algorithms use some kind of labeled data to learn the model parameters for each behavior. But, our algorithm differs from all the others mentioned above in that the behavior model thus learnt is used as a prior for tracking, thus enhancing the tracking accuracy. Moreover, this also means that manual labeling is required only for the training sequences and not for any of the test videos.

### B. Relation to Previous Work

Previous work in tracking and analyzing the behaviors of bees, have dealt either with the visual tracking problem [12] or with that of accurately modeling and analyzing the tracked trajectories of the insects

[21][24][23]. This is the first study that tackles both tracking and behavior modeling in a closed loop manner. By closing the loop, and enabling the tracking algorithm to be aware of the behavior models, we have improved the tracking performance significantly. Experiments in the next section will demonstrate the improvement of the tracking performance for two video sequences that have drastic motions. Once the results of the tracking algorithm are available, one can in principle analyze the tracked trajectories using any appropriate behavior model - the hierarchical Markov model or the p-SLDS. In all the experiments reported in this paper, we have used the hierarchical Markov motion model to analyze the behavior of the bees.

### *C. Tracking dancing bees in a hive*

We conducted tracking experiments on video sequences of bees in a hive. In all the experiments reported the training data and the test data were mutually exclusive. In the videos, the bees exhibited three behaviors- the waggle dance, the round dance and a stationary bee. In all our simulations we used 300 to 600 particles. The video sequences ranged between 50 frames to about 700 frames long. It is noteworthy that when a similar tracking algorithm without a behavioral model was used for tracking, it lost track within 30-40 frames (See Table I for details). With our behavior-based tracking algorithm, we were able to track the bees during the entire length of these videos. We were also able to extract parameters like the orientation of the various body parts during each frame over the entire video sequences. We used these parameters to automatically identify the behaviors. We also verified this estimate manually and found it to be robust and accurate.

Figure 6 shows the structural model of the tracked bee superimposed on the original image frame. In this particular video, the bee was exhibiting a waggle dance. The results are best viewed in color since the tracking algorithm had color images as observations. The figure shows the top five tracked particles (blue being the best particle and red being the fifth best particle). As is apparent from the sample frames the appearance of the dancer varies significantly within the video. These images display the ability of the tracker to maintain track even under extreme clutter and in the presence of several similar looking bees. Frames 30-34 show the bee executing a waggle dance. Notice that the abdomen of the bee waggles from one side to another.

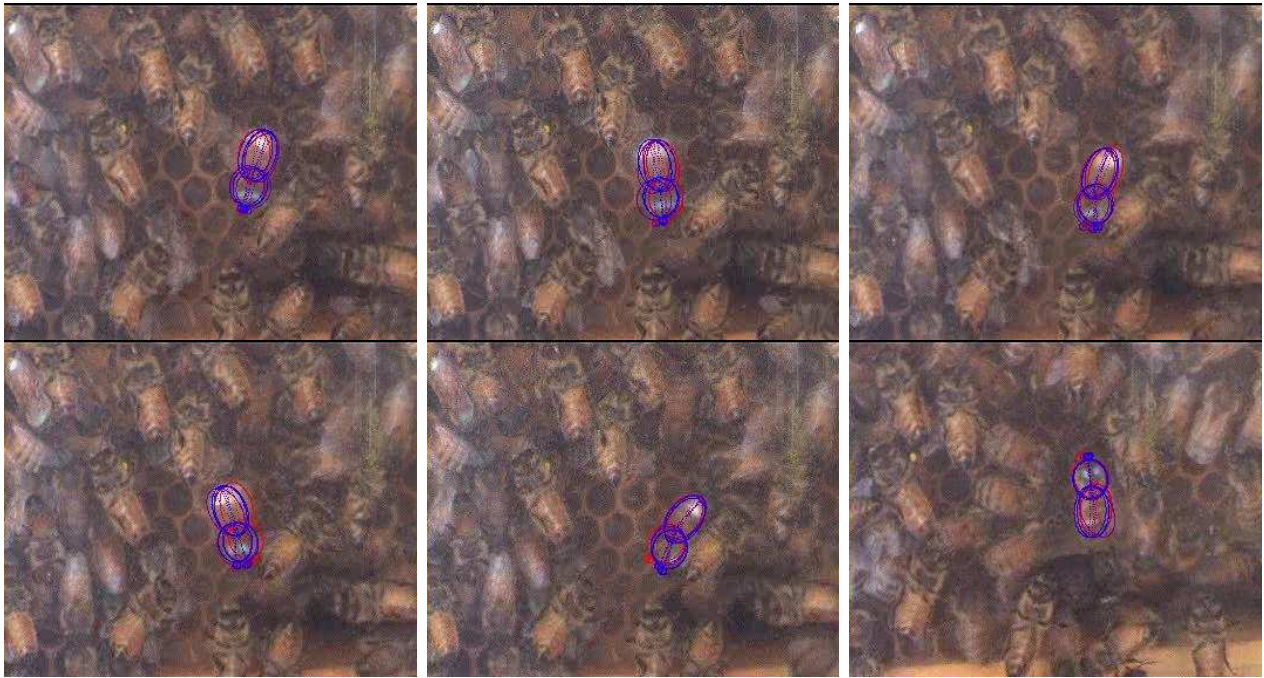


Fig. 6. Sample Frames from a tracked sequence of a bee in a beehive. Images show the top 5 particles superimposed on each frame. Blue denotes the best particle while red denotes the fifth best particle. Frame Numbers row-wise from top left :30, 31, 32, 33, 34 and 90. Figure best viewed in color.

1) *Occlusions*: Figure 7 shows the ability of the behavior based tracker to maintain track during occlusions in two different video sequences. There is significant occlusion in frames 170, 172 and 187 of video sequence 1. In fact, in fame 172, occlusion forces the posterior pdf to become bimodal (another bee in close proximity). But we see that the track is regained when the bee emerges out of occlusion in frame 175. In frame 187, we see that the thorax and the head of the bee are occluded while the abdomen of the bee is visible. Therefore the estimate of the abdomen is very precise (all five particles shown indicate the same orientation of abdomen). Since the thorax is not visible we see that there is a high variance in the estimate of the orientation of the thorax and the head. Structural modeling has ensured that, in spite of the occlusion, only physically realizable orientations of the thorax and the head are maintained. In frame 122 of video sequence 2, we see that another bee completely occludes the bee being tracked. This creates confusion in the posterior distribution of the position and orientation. But, behavior modeling ensures that most particles still track the correct bee. Moreover, at the end of occlusion in frame 123, the track is regained. Frame 129 in video sequence 2, shows another case of severe occlusion. But, once again, we see that the tracker maintains track during occlusion and immediately after occlusion ( Frame 134). Thus behavior modeling helps to maintain tracking under extreme clutter and severe occlusions.



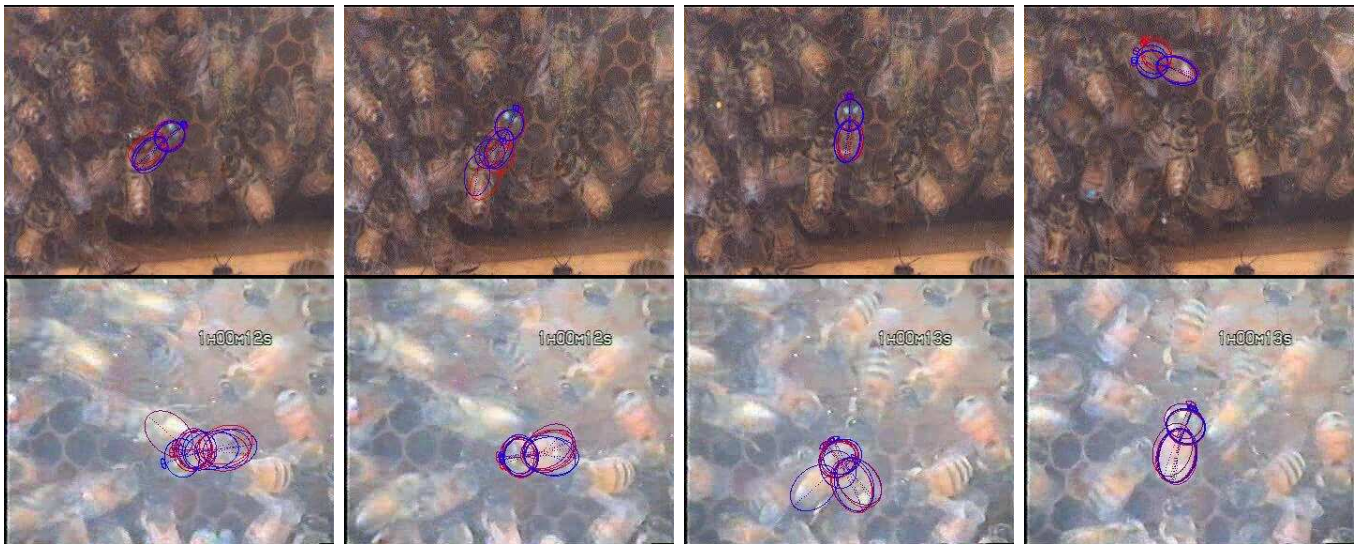


Fig. 7. Ability of the behavior based tracker to maintain tracking during occlusions in two different video sequences. Images show the top 5 particles superimposed on each frame- Blue denotes the best particle and red denotes the fifth best particle. Row 1: Video 1- Frames 170, 172, 175 and 187 and Row 2: Video 2- Frames 122, 123, 129 and 134. Figure best viewed in color.

#### D. Importance of Shape and behavioral Model for Tracking

To quantify the importance of the shape and the behavioral model in the above-mentioned tracking experiments, we also implemented another recent and successful tracking algorithm also based on a particle-filter based inference. We implemented the visual tracking algorithm based on an adaptive appearance model described in [11]. We also implemented a minor variation of this algorithm by incorporating our shape model within their framework. In either case we spent a significant amount of time and effort in varying the parameters of the algorithm so as to obtain the best possible tracking results with these algorithms. We compare the performance of our tracking algorithm to the two approaches mentioned above on two different video sequences in Table I. Both these videos consisted of a hand-held camera held over the vertical face of the bee-hive. There were several bees within the field of view of each of these videos, but we were interested in tracking the dancing bees in both videos. So, we initialized the tracking algorithm on the dancers in all these experiments. Moreover, these video sequences were also specifically chosen since the bees exhibited drastic motion changes during the videos and the illumination and lighting remained fairly consistent during the course of these videos. This gives us a nice testbed to evaluate the performance of the shape and behavior model fairly independent of other challenges in tracking like illumination. The incorporation of the shape constraints improves the performance of the tracking algorithm showing that an

TABLE I

COMPARISON OF OUR BEHAVIOR BASED TRACKING ALGORITHM(BT) WITH VISUAL TRACKING (VT) [11] AND THE SAME VISUAL TRACKING ALGORITHM ENHANCED WITH OUR SHAPE MODEL (VT-S)

Video Name	Video 1			Video 2		
Total Frames	550			200		
Algorithm	VT	VT-S	BT	VT	VT-S	BT
Number of Particles	500	500	500	500	500	500
Successful Tracking	No	No	Yes	No	No	Yes
Number of Missed Tracks	14	10	0	5	5	0
Average No. of Frames Tracked	37	50	550	33	33	200

anatomically correct model improves tracking performance. We declared that a tracking algorithm "Lost Track" when the distance between the estimated position of the bee and the actual position of the bee on the image was greater than half the length of the bee. We see that while the proposed tracking algorithm was able to successfully track the bee over the length of the entire video sequences, the other approaches implemented were not able to. The table also clearly shows that the behavior aided tracking algorithm that we propose significantly outperforms the adaptive appearance based tracking [11].

#### *E. Comparison with Ground Truth*

We validated a portion of the tracking result by comparing it with a "ground truth" track obtained using manual ("point and click") tracking by an experienced human observer. We find that the tracking result obtained using the proposed method is very close to manual tracking. The mean differences between manual and automated tracking using our method are given in Table II. The positional differences are small compared the average length of the bee, which is about 80 pixels (from front of head to tip of abdomen).

#### *F. Modes of failure*

Even in the presence of the improved behavior model based tracking algorithm, there are some extremely challenging video sequences, where the improved tracking algorithm resulted in some missed tracks. The

TABLE II

COMPARISON OF OUR TRACKING ALGORITHM WITH GROUND TRUTH

	Average positional difference between Ground Truth and our algorithm
Center of Abdomen	4.5 pixels
Abdomen Orientation	0.20 radians (11.5 deg)
Center of Thorax	3.5 pixels
Thorax orientation	0.15 radians (8.6 deg)

primary modes of failure are

- **Illuniation:** We are interested in studying and analyzing bee dances. Bee dances are typically performed in the dark environment of the bee-hive. Since the bees typically prefer to dance only in minimal lighting, some of the videos end up being quite dark. Moreover, there are also significant illumination changes depending upon the exact position of the dancer on the bee hive. These illumination changes posed the most significant challenge for the tracking algorithm and most of the tracking failures can be attributed to illumination based challenges in tracking. Even in such videos, the tracking algorithm with the behavior and anatomical model, outperforms the adaptive appearance based tracking algorithm [11]. Recently, a lot of research effort has been invested in studying and developing appearance models that are either robust or invariant to illumination changes [34][35]. Augmenting the appearance model with illumination invariant appearance models might reduce some of the errors caused due to illumination changes. Since the focus of this work was on behavior modeling, we did not systematically analyze the effect of incorporating such illumination invariant appearance models in our algorithm.
- **Occlusions:** Another reason for some of the observed tracking failures, is occlusions. The bee hive is full of several bees which are very similar in appearance. Sometimes, the dancing bee disappears below other bees and then reappears after a few frames. As described in Section V-C.1, when the dancing bee is occluded for a relatively small number of frames, the algorithm is able to regain track when the bee emerges out of occlusions (refer Figure 7). But in some videos, the dancing bee remains occluded for over 30 frames or more. during such cases of extreme occlusions, the tracking algorithm is unable to regain track. During such cases of extreme occlusions, the only reasonable way to regain

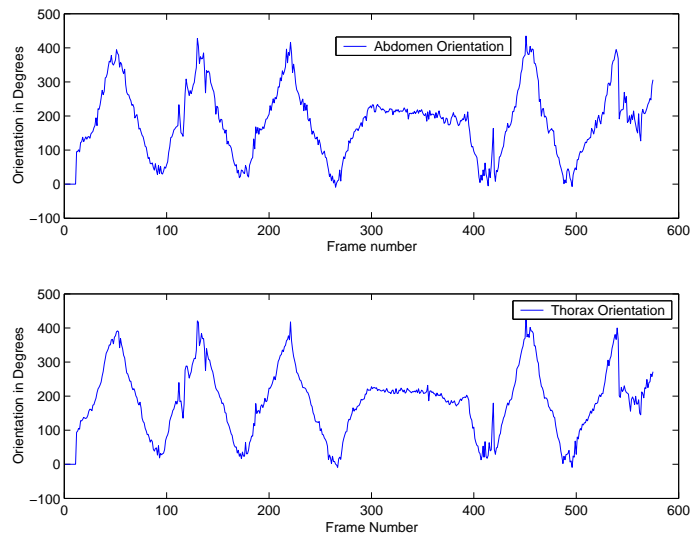


Fig. 8. The orientation of the Abdomen and the Thorax of a bee in a video sequence of about 600 frames

track would be to design an initialization algorithm that can potentially discover dancing bees in a hive. This would be an extremely challenging task, considering the complex nature of motions in a bee hive and the fact that there are several moving bees in every frame of the video. In practice, it might be a good idea to perform manual reinitialization in such videos.

### G. Estimating Parameters of the Waggle Dance

Foraging honeybees communicate the distance, direction and the attractiveness of the food source through the waggle dance. The details of the waggle dance were discussed in detail in Section I-B. The duration of the waggle portion of the dance and the orientation of the waggle axis are some of the parameters of interest while analyzing the bee dances. The duration of the waggle portion of the dance may be estimated by carefully filtering the orientation of the thorax and the abdomen of a honeybee as it moves around in its hive. Moreover, the orientation of the waggle axis can also be estimated from the orientation of the thorax during the periods of waggle.

Figure 8 shows the estimated orientation of the abdomen and the thorax in a video sequence of around 600 frames. The orientation is measured with respect to the vertically upward direction in each image frame and a clockwise rotation would increase the angle of orientation while an anticlockwise rotation would decrease the angle of orientation.

The waggle dance is characterized by the central wagging portion which is immediately followed by a turn, a straight run another turn and a return to the wagging section as shown in Figure 3. After every

alternate wagging section the direction of the turning is reversed. This is clearly seen in the orientation of both abdomen and the thorax. The sudden change in slope (from positive to negative or vice-versa) of the angle of orientation denotes the reversal of turning direction. During the waggle portion of the dance, the bee moves its abdomen from one side to another while continuing to move forward slowly. The large local variation in the orientation of the abdomen just before every reversal of direction shows the wagging nature of the abdomen. Moreover, the average angle of the thorax during the waggle segments denotes the direction of the waggle axis.

TABLE III

COMPARISON OF WAGGLE DETECTION WITH HAND LABELING BY EXPERT

	Automated Labeling (Frame Numbers)	Expert Labeling (Frame Numbers)
Waggle 1	46 - 55	46 - 56
Waggle 2	88 - 95	89 - 97
Waggle 3	127 - 141	127 - 140
Waggle 4	171 - 180	171 - 181
Waggle 5	210 - 222	211 - 222
Waggle 6	255 - 274	257 - 274
Waggle 7	406 - 424	407 - 423
Waggle 8	444 - 461	444 - 461
Waggle 9	486 - 502	486 - 502
Waggle 10	532 - 543	534 - 544

In order to estimate the parameters of the waggle dance, we use some heuristics described below. During the wagging portion of the dance, the bee moves its abdomen from one side to another in the direction transverse to the direction of motion. The average absolute motion of the center of the abdomen about an axis transverse to the axis of motion is used as a waggle detection statistic. When this statistic is large then the probability of waggle during that particular frame is large. Moreover, we also recognize that the waggle portion of the dance is followed by a change in the direction of turning. Therefore, only those frames that are followed by a change in direction of turning and have a high 'waggle detection statistic' are labeled as waggle frames. Once the frames in which the bee waggles are estimated, it is then relatively straightforward to estimate the waggle axis. The waggle axis is estimated as the average orientation of the thorax during a single waggle run. Table III shows the frames that were detected as

waggle frames automatically. We also hand-labeled the same video sequence by an expert. The Table also shows the frames that were labeled as 'waggle' by the expert. There were a total of 138 frames that were labeled as 'waggle' by the expert. Of these 138 frames, 133 frames were correctly labeled automatically using the procedure described above.

## VI. CONCLUSIONS AND FUTURE WORK

We proposed a method using behavioral models to reliably track the position/orientation and the behavior of an insect and applied it to the problem of tracking bees in a hive. We also discussed issues in learning models, discriminating between behaviors and detecting and modeling abnormal behaviors. Specifically, for the waggle dance, we also proposed and used some simple statistical measures to estimate the parameters of interest in a waggle dance. The modeling methodology is quite generic and can be used to model activities of humans by using appropriate features. We are working to extend the behavior model by modeling interactions among insects. We are also looking to extend the method to problems like analyzing human activities.

## REFERENCES

- [1] V. Frisch, *The Dance Language and orientation of bees*. Cambridge MA:Harvard University Press, 1993.
- [2] M. Srinivasan, S. Zhang, M. Lehrer, and T. Collett, "Honeybee navigation en route to the goal: visual flight control and odometry," *Journal of Experimental Biology*, vol. 199, pp. 237–244, 1996.
- [3] T. Neumann and H. Bulthoff, "Insect inspired visual control of translatory flight," *Proceedings of the 6th European Conference on Artificial Life ECAL 2001*, pp. 627–636, 2001.
- [4] F. Mura and N. Franceschini, "Visual control of altitude and speed in a flight agent," *Proceedings of 3rd International Conference on Simulation of Adaptive Behaviour: From Animal to Animats*, pp. 91–99, 1994.
- [5] G. Hager and P. Belhumeur, "Efficient region tracking with parametric models of geometry and illumination," *IEEE Transactions on PAMI*, vol. 20, pp. 1025–1039, 1998.
- [6] D. Comaniciu, V. Ramesh, and P. Meer, "Real-time tracking of non-rigid objects using mean-shift," *CVPR*, vol. 2, pp. 142–149, 2000.
- [7] T. Broida, S. Chandra, and R. Chellappa, "Recursive techniques for the estimation of 3-d translation and rotation parameters from noisy image sequences," *IEEE Transactions on Aerospace and Electronic systems*, vol. AES 26, pp. 639–656, 1990.
- [8] A. Doucet, N. Freitas, and N. Gordon, *Sequential Monte Carlo methods in practice*. Springer-Verlag, New York, 2001.
- [9] M. Isard and A. Blake, "Contour tracking by stochastic propagation of conditional density," *ECCV*, pp. 343–356, 1996.
- [10] J. Liu and R. Chen, "Sequential monte carlo for dynamical systems," *Journal of the American Statistical Association*, vol. 93, pp. 1031–1041, 1998.
- [11] S. Zhou, R. Chellappa, and B. Moghaddam, "Visual tracking and recognition using appearance-adaptive models in particle filters," *IEEE Trans. on Image Processing*, vol. 11, pp. 1434–1456, 2004.

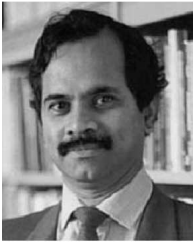
- [12] Z. Khan, T. Balch, and F. Dellaert, "A rao-blackwellized particle filter for eigen tracking," *CVPR*, 2004.
- [13] H. Lee and Z. Chen, "Determination of 3d human body posture from a single view," *Computer Vision, Graphics, Image Processing*, vol. 30, pp. 148–168, 1985.
- [14] C. Sminchisescu and B. Triggs, "Covariance scaled tracking for monocular 3d body tracking," *Conference on Computer Vision and Pattern Recognition*, 2001.
- [15] M. Black and A. Jepson, "A probabilistic framework for matching temporal trajectories," *ICCV*, vol. 22, pp. 176–181, 1999.
- [16] T. Zhao, T. Wang, and H. Shum, "Learning a highly structured motion model for 3d human tracking," *Proc. of 5th Asian Conference on Computer Vision*, 2002.
- [17] J. Cheng and J. Moura, "Capture and representation of human walking in live video sequence," *IEEE Transactions on Multimedia*, vol. 1(2), pp. 144–156, 1999.
- [18] C. Bregler, "Learning and recognizing human dynamics in video sequences," *CVPR*, 1997.
- [19] T. Zhao and R. Nevatia, "3d tracking of human locomotion: a tracking as recognition approach," *ICPR*, 2002.
- [20] V. Pavlovic, J. Rehg, T. Cham, and K. Murphy, "A dynamic bayesian network approach to figure tracking using learned dynamic models," *ICCV*, 1999.
- [21] S. M. Oh, J. M. Rehg, T. Balch, and F. Dellaert, "Learning and inference in parametric switching linear dynamic systems," *IEEE International Conference on Computer Vision*, 2005.
- [22] T. D. Seeley, "The tremble dance of the honeybee: message and meanings," *Behavioral Ecology and Sociobiology*, vol. 31, pp. 375–383, 1992.
- [23] A. Feldman and T. Balch, "Automatic identification of bee movement using human trainable models of behavior," *Mathematics and Algorithms of Social Insects*, Dec 2003.
- [24] S. M. Oh, J. M. Rehg, T. Balch, and F. Dellaert, "Parameterized duration modeling for switching linear dynamic systems," *IEEE International Conference on Computer Vision and Pattern Recognition*, 2006.
- [25] M. Isard and A. Blake, "A mixed-state condensation tracker with automatic model-switching," *ICCV*, 1998.
- [26] S. Blackman and R. Popoli, *Design and Analysis of Modern Tracking Systems*. Artech House, 1999.
- [27] S. Fine, Y. Singer, and N. Tishby, "The hierarchical hidden markov model: Analysis and applications," *Machine Learning*, vol. 32, no. 1, pp. 41–62, 1998.
- [28] X. Koutsoukos and P. Antsaklis, "Hierarchical control of piecewise linear hybrid dynamical systems based on discrete abstractions," *ISIS Technical Report*, Feb 2001.
- [29] A. Blake, B. North, and M. Isard, "Learning multi-class dynamics," *Advances in NIPS*, pp. 389–395, 1999.
- [30] B. Juang and L. Rabiner, "A probabilistic distance measure for hidden markov models," *ATT Technical Journal*, vol. 64, pp. 391–408, 1985.
- [31] N. Vaswani, "Additive change detection in nonlinear systems with unknown change parameters," *IEEE Transactions on Signal Processing*, p. accepted, 2006.
- [32] —, "Change detection in partially observed nonlinear dynamic systems with unknown change parameters," *American Control Conference*, 2004.
- [33] N. Gordon, D. Salmond, and A. Smith, "Novel approach to non-linear/non-gaussian bayesian state estimation," *IEE Proceedings on Radar and Signal Processing*, vol. 140, pp. 107–113, 1993.

- [34] D. Freedman and M. Turek, "Illumination-invariant tracking via graph cuts," *IEEE International Conference on Computer Vision and Pattern Recognition*, 2005.
- [35] Y. Xu and A. Roy-Chowdhury, "Integrating motion, illumination and structure in video sequences, with applications in illumination-invariant tracking," *Accepted for Publication at IEEE Transactions on Pattern Analysis and Machine Intelligence*, 2006.



**Ashok Veeraraghavan** received his B.Tech in Electrical Engineering from the Indian Institute of Technology, Madras in 2002 and M.S from the Department of Electrical and Computer Engineering at the University of Maryland, College Park in 2004. He is currently a Doctoral student in the Department of Electrical and Computer Engineering at the University of Maryland at College Park. His research interests are in signal, image and video processing, computer vision, pattern recognition and graphics.





**Rama Chellappa** (F92) received the M.S.E.E. and Ph.D. degrees in electrical engineering from Purdue University, West Lafayette, IN, in 1978 and 1981, respectively. Since 1991, he has been a Professor of Electrical Engineering and an affiliate Professor of Computer Science at the University of Maryland, College Park. He is also affiliated with the Center for Automation Research (Director) and the Institute for Advanced Computer Studies (Permanent Member). Recently, he was named a Minta Martin Professor of Engineering. Prior to joining the University of Maryland, he was an Assistant (1981-1986) and Associate Professor (1986–1991) and Director of the Signal and Image Processing Institute (1988-1990) with the University of Southern California (USC), Los Angeles. Over the last 25 years, he has published numerous book chapters and peer-reviewed journal and conference papers. He has co-authored and edited many books in visual surveillance, biometrics, MRFs and image processing. His current research interests are face and gait analysis, 3-D modeling from video, automatic target recognition from stationary and moving platforms, surveillance and monitoring, hyper spectral processing, image understanding, and commercial applications of image processing and understanding.

Dr. Chellappa served as the Associate Editor of many IEEE TRANSACTIONS and as the Editor-in-Chief of IEEE TRANSACTIONS ON PATTERN ANALYSIS AND MACHINE INTELLIGENCE. He served as a member of the IEEE Signal Processing (SP) Society Board of Governors and also as its Vice President of Awards and Membership. He has received several awards, including National Science Foundation (NSF) Presidential Young Investigator Award, two IBM Faculty Development Awards, an Excellence in Teaching Award from the School of Engineering at USC, the Best Industry Related Paper Award from the International Association of Pattern Recognition (with Q. Zheng), and a Technical Achievement Award from the IEEE Signal Processing Society. He was elected as a Distinguished Faculty Research Fellow and as a Distinguished Scholar-Teacher at University of Maryland. He is a Fellow of the International Association for Pattern Recognition. He has served as a General the Technical Program Chair for several IEEE international and national conferences and workshops. He is a Golden Core Member of IEEE Computer Society.



**Mandyam Srinivasan** holds an undergraduate degree in Electrical Engineering from Bangalore University, a Master's degree in Electronics from the Indian Institute of Science, a Ph.D. in Engineering and Applied Science from Yale University, a D.Sc. in Neuroethology from the Australian National University, and an Honorary Doctorate (Doctor honoris causa) from the University of Zurich. He is presently Professor of Visual Neuroscience at the Queensland Brain Institute of the University of Queensland. He is a Fellow of the Australian Academy of Science, a Fellow of the Royal Society of London, and an Inaugural Australian Research Council Federation Fellow. Srinivasan's research focuses on the principles of visual processing in simple natural systems, and on the application of these principles to machine vision and robotics.